

# NOVA meeting and coffee tables



## FEATURES

- Easy to assemble and disassemble - "metal to metal" construction
- Just one tool for assembling (DIN911 S5)
- Bolted connections (without screws)

## QUALITY STANDARD

- LST EN 527-1:2011
- LST EN 527-2:2017
- LST EN 1730:2012

## TECHNICAL INFORMATION

### Tabletop

- 25 mm chipboard covered in wood veneer with 2 mm edging;
- 10 mm gap between the legs and the desktop;
- Desk height - 740 mm;
- Inserts made of 25 mm MFC (melamine) with 2 mm edging.

### Metal beam

- Metal tube - 40x20 mm;
- With welded metal plates for leg fixing;
- Powder coated metal, colour matches the legs.

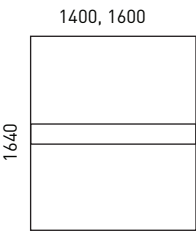
### Legs

- Welded metal tube - 40x40 mm;
- Powder coated metal;
- Plastic feet with height levelling (+10 mm).

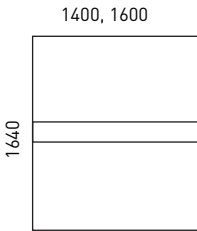
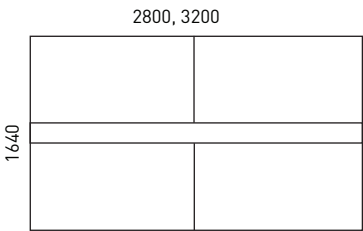
## GUARANTEE

- 5 years

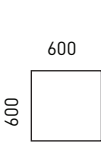
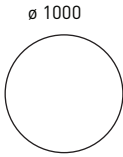
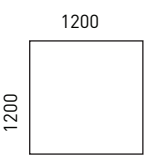
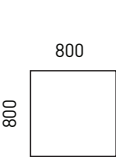
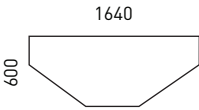
RANGE



Meeting tables



Supplementary units



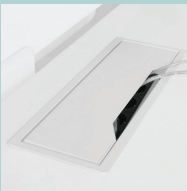
Coffee tables

Must be ordered

Optional



Inserts



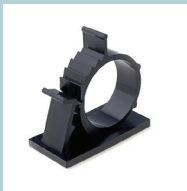
Metal grommet



Power socket blocks



Cable trays



Cable clips



Cable ducts